

HOW TO INSTALL A SHED WINDOW



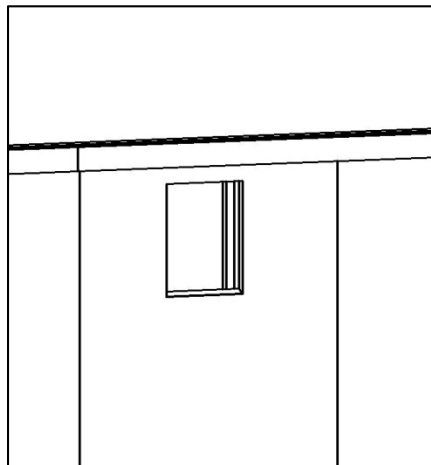
Tools Needed

The following list of tools is used to install a window and the associate framing. If you already have the framing installed you can omit some of these tools.

- Circular saw
- Power cords
- Step Ladder
- Tape Measure
- Pencil
- Safety goggles
- Screw gun
- Hammer
- Chalk line
- Wood Shims
- Level

Determine Rough Opening

- The first step to installing your shed window is to determine the rough opening. For a rectangular window you want to measure the overall width and length of the window and then add 1/4" to that measurement, For instance, if the window frame measures 14"x21", you want the rough opening to be 14-1/4" x 21-1/4". The opening itself can be made from 2x3 or 2x4 dimensional lumber. The picture below shows a typical rough opening



Prepare to install

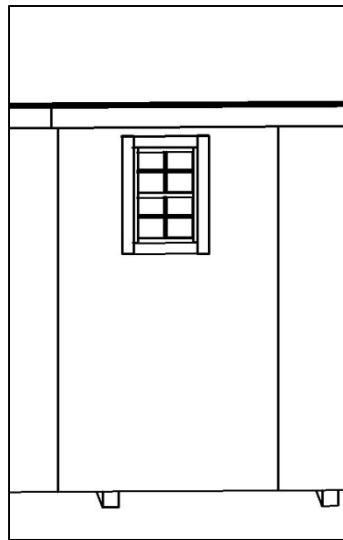
Once the rough opening is framed out, dry fit the window into the opening. You want to center the window both horizontally and vertically. You also want to make sure it's plumb and level, and adjust as necessary using the level. Use wood shims as necessary to achieve the desired spacing.

Remove the window and gather the necessary hardware to install. You can use either small, flat head exterior screws or small roofing nails. **WARNING-** if your window has standard glass be careful about pounding on the frame. Too much pounding can cause the glass to break. If your window has safety glass you don't have to worry as much. The preferred method is to use screws.

With the help of another person, place the window into the frame and install screws around the perimeter of the frame. For small window, 1-2 screws per side should suffice. For larger windows, 2-3 screws may be necessary. If you are using nails on larger windows, you may want to predrill the holes to prevent the glass from shattering.

Add trim

After the window is installed, add some 1x3 trim around the perimeter. You can either paint the trim the color of your choice, or wrap the trim with painted aluminum with the help of a brake.



Add Some Accessories

Add some cool accessories to accent your newly installed window. You could add a flower box to plant your favorite flowers in, or even some shed shutters to match the shutters on your house